

Preliminary

RA 1000-T/SP6

Definition

The «RA 1000-T/SP6» is a current transducer designed to measure AC components, in a determined bandwidth, contained in a primary DC current up to 2400 A.

Electrical data

Nominal primary current (DC)	: 1000 A
Maximum primary current (DC)	: 2400 A
Measuring range of the I_p AC current component	: 10 A max.
Allowable short-circuit current	: 50 kA
Analog output current I_M	: 200 mA max.
Current ratio I_p/I_M	: 10 A/200 mA
Measuring resistance	: 10 ohm min, 45 ohm max.
Supply voltage	: + and - 15 V ($\pm 5\%$)
Isolation	: between primary and secondary : 6 kV rms/50Hz/1 min.

Accuracy - Dynamic performance

Continuous offset current (of I_M)	: max. ± 1 mA
Accuracy within the bandwidth and the temperature range, for $I_p > 0.5$ A rms.	: $\pm 5\%$ of I_p
Bandwidth	: 40 to 120 Hz
Attenuation at 29 Hz and 165 Hz	: 15 dB
Response time	: 40 ms

Test circuit

Number of turns	: 200
Resistance	: 10.5 ohm ($\pm 5\%$) at +70°C
Test current	: 50 mA during 2 s.

General data

Operating temperature	: -25°C to +70°C
Storage temperature	: -40°C to +85°C
Current consumption	: 60 mA + output current
Package	: - potted into an insulated self-extinguishing plastic case - accessible electronic circuit
Weight	: 6.3 kg.
Fastening	: by the primary bar
Connection to primary circuit	: on primary bar
to secondary circuit	: on 6 M5 threaded studs

Special feature

: measurement of AC components in DC current.

Note : the temperature of the primary conductor should not exceed 100°C.

980324/0

LEM SA



CASE POSTALE 785
CH-1212 GRAND-LANCY 1
GENEVA, SWITZERLAND



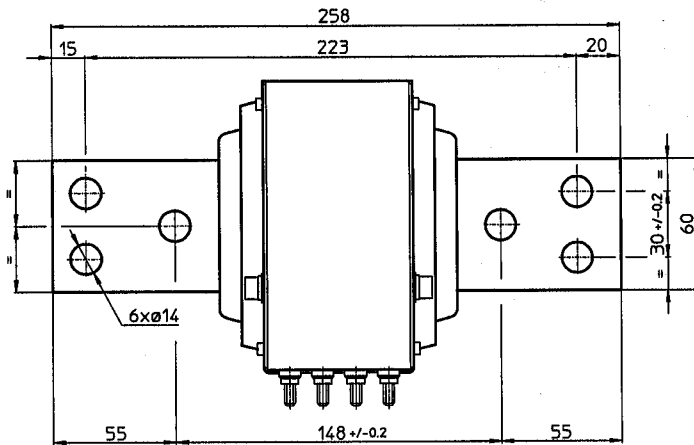
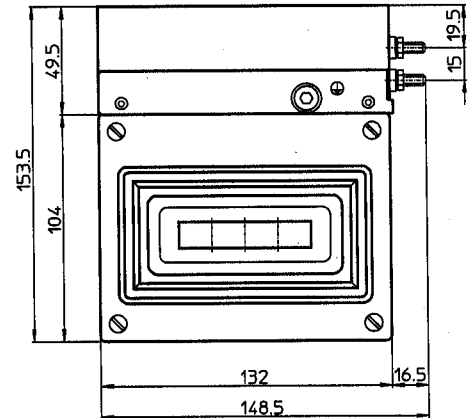
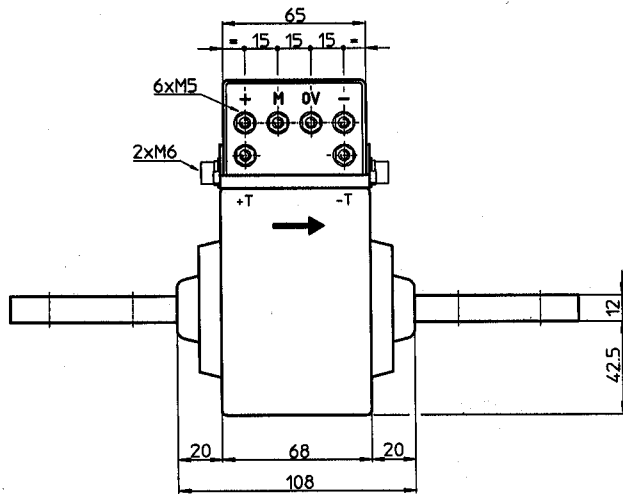
CHEMIN DES AULX 8
CH-1228 PLAN-LES-OUATES
GENEVA, SWITZERLAND



TEL: 022/ 706 11 11
FAX: 022/ 794 94 78

Dimensions RA 1000-T/SP6

General tolerance ± 0.5 mm

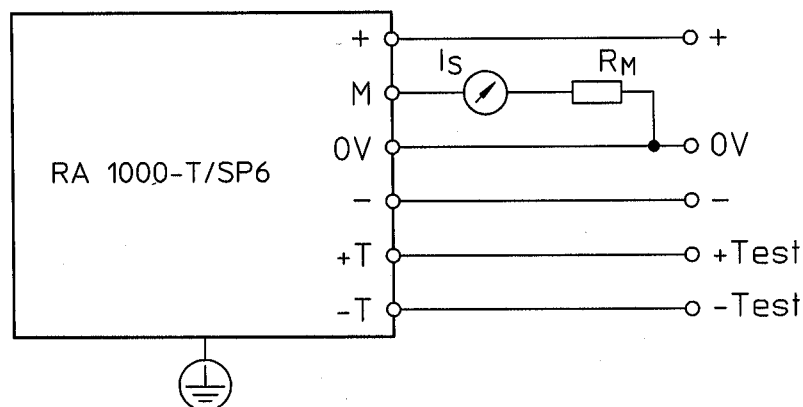


Secondary terminals :

- Terminal+ : supply voltage + 15 V
- Terminal M : measure
- Terminal 0V : 0 V
- Terminal - : supply voltage - 15 V
- Terminal T+ : + test winding
- Terminal T- : - test winding

Note : fastening torque of secondary connections : 2.2 Nm

Connection :



«This data sheet is a translation of the French version which is deemed authentic.»

We reserve the right to carry out modifications on our transducers, in order to improve them, without previous notice.